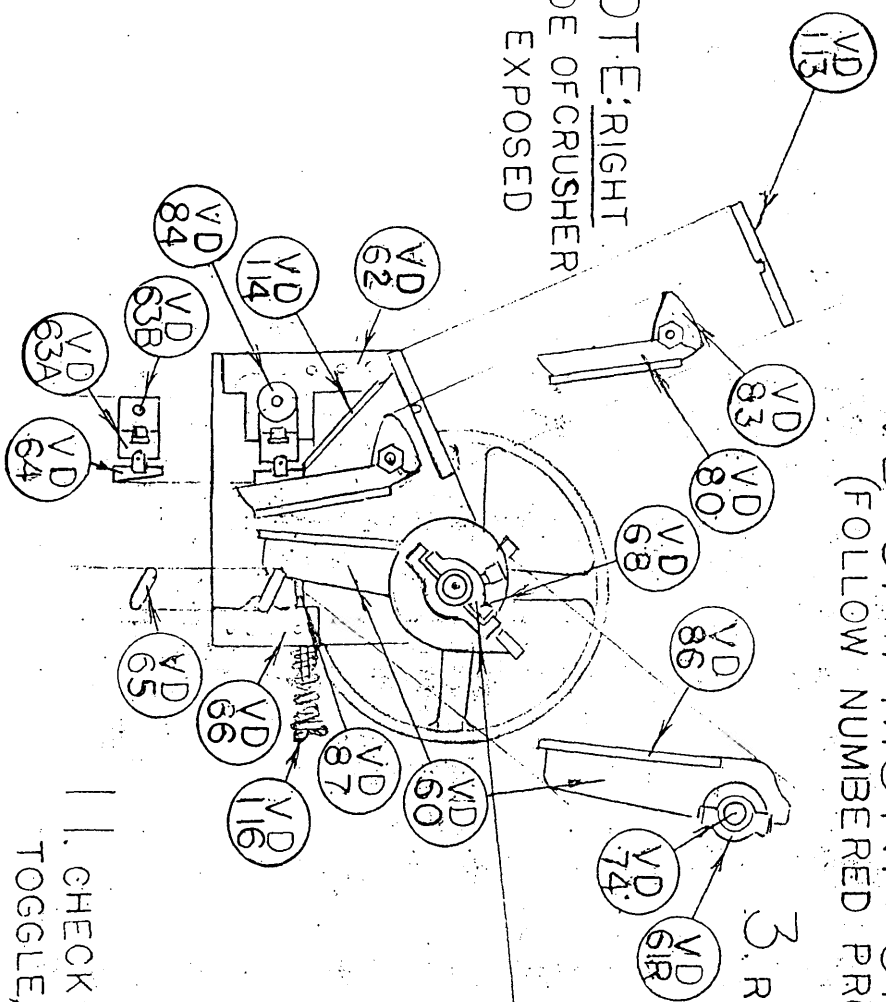


PROCEDURE TO REPLACE PARTS ON THE VD CHIPMUNK CRUSHER

(FOLLOW NUMBERED PROCEDURES)

NOTE: RIGHT
SIDE OF CRUSHER
EXPOSED

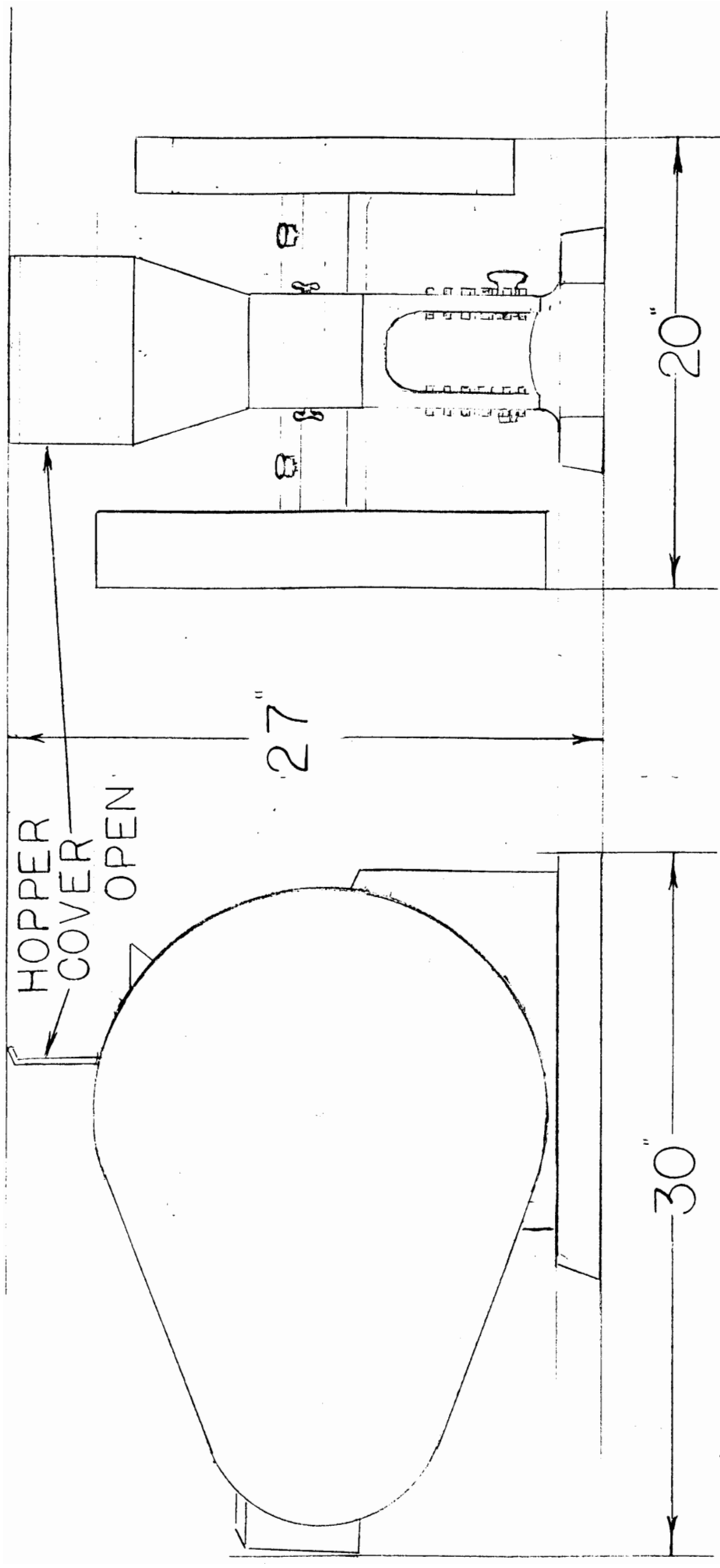


1. REMOVE HOPPER & CORE PA
2. REMOVE GUARDS & BELTS
3. REMOVE VD-113
4. PRY UP VD-83 AND LIFT OUT VD-83 & VD-80
5. REMOVE PULLEY & FLYWHEEL
6. REMOVE GREASE CUPS
7. REMOVE 8 BEARING CAP BOLTS AND REMOVE BOTH BEARING CAPS
8. UNHOOK VD-87 & LIFT OUT VD-74 & VD-66 (VD-65 WILL DROP OUT)
9. REMOVE VD-14 & VD-84 & SLIDE OUT VD-63B, VD-63A & VD-64
10. REMOVE VD-61R

1. CHECK ALL PARTS FOR WEAR (TOGGLE BLOCK, TOGGLE, ALL BUSHINGS, JAW & CHEEK PLATES, ETC)

NOTE: TO REMOVE VD-63-B, VD-63A & VD-64 ONLY: (A) REMOVE VD-113. (B) PRY UP VD-83 AND LIFT OUT VD-83 & VD-80. (C) REMOVE VD-86 & BOTH CHEEK PLATES. (D) LOOSEN VD-116 & UNHOOK VD-87 & REMOVE VD-65. (E) REMOVE VD-84. (F) REACH UNDER CRUSHER & REMOVE VD-63B, VD-63A & VD-64 ASSEMBLY HINTS: NEVER OVERTIGHTEN ANY BEARING BOLT OR SET JAWS $\frac{1}{2}$ (CAUSE DAMAGE)

1. ASSEMBLE IN REVERSE ORDER TO #3 1-1 2. DRIVE (BELT) PULLEY GOES WITH VD-65
3. TO REPLACE VD-63B, VD-63A & VD-64 ONLY: FOLLOW ON LEFT SIDE OF CRUSHER (OPP. VD-84) (A) TO (F) IN REVERSE. 4. TO ADJUST BEARINGS: LOOSEN THE SQUARE HEAD SET SCREWS (BEHIND THE CAPS). TIGHTEN THE HEX-HEAD BOLTS A FRACTION AT A TIME, ALTERNATELY AND EVENLY. (THE RIGHT TIGHTNESS IS WHEN A VERY SLIGHT DRAG IS FELT WHEN PULLEY OR FLYWHEEL IS TURNED BY HAND) SNIP TIP SCREW DRIVERS TO PREVENT DAMAGE TO



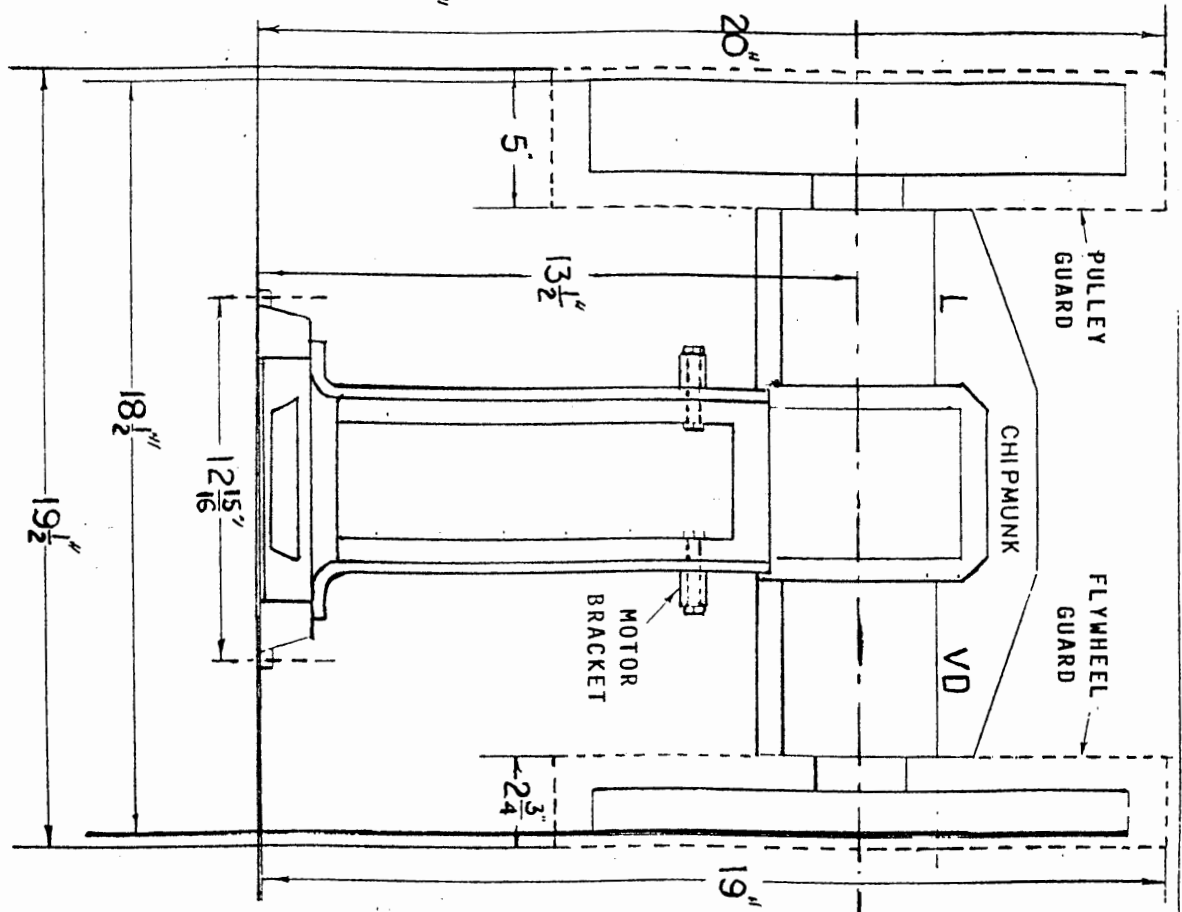
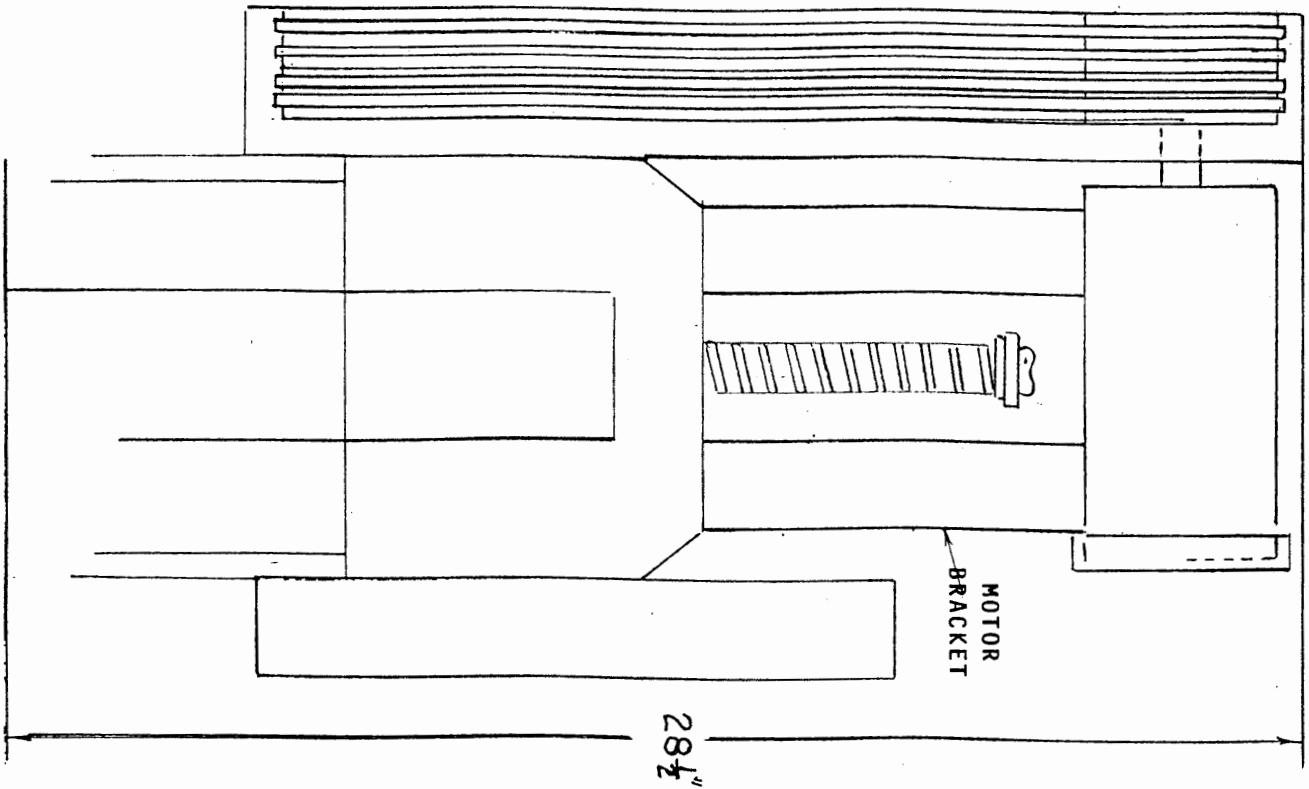
HOPPER
COVER
OPEN

27"

30"

20"

BICO INC. (V.D. CRUSHER)



BICO INC

SCALE: NONE

DATE: 10-10-91

DRAWN BY: D.F.

REVISED:

VD CRUSHER WITH
MOTOR BRACKET